

HALLMARK *Place*



Hallmark Residential Condominiums Ltd.

HALLMARK *Place* includes superior recreational facilities, such as whirlpool, sauna, exercise room, squash court, men's and women's change room with showers, party room and a garden patio/terrace. Heated underground parking, as well as surface parking, are available to purchase. The lobby and common area have been designed with security in mind. For your convenience, the Property Management office and other commercial services are located on the main floor.



Whirlpool



Exercise Room

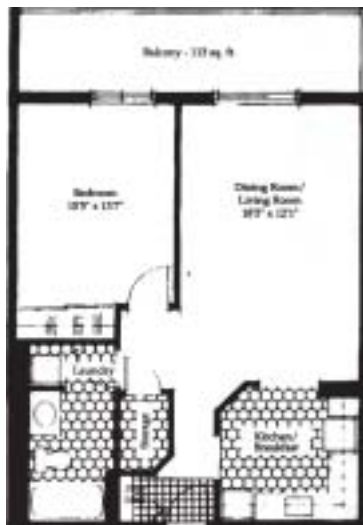
All suites include:

- 5 appliances—fridge, stove, dishwasher, washer and dryer.
- Spacious, private balconies
- Individually controlled heating and Central air conditioning
- In-suite storage - in some floor plans
- Custom-built contemporary kitchen cabinetry, with ample counter and cupboard space
- Elegant foyers at suite entrances (quarry tile and mirrored closet doors)
- Smoke detectors and sprinkler system
- Enterphone security system to maximize privacy
- New carpet & linoleum or \$3000.00 to \$4000.00 cash in improvements

Wedgewood



Doulton



Aynesley



Hallmark features:

- Underground heated parking (secured) & electrified surface parking
- Cable/Free satellite (7 channels)
- Inbuilding convenience store
- Inbuilding hair styling shop
- Elevators (2) Highspeed
- On site office managers
- Handicap accessibility
- Concrete construction
- Garden patio/terrace
- Downtown location
- Rec/meeting room
- Overnight security
- Racquetball court
- Sprinkler system
- Workshop room
- Smoke detectors
- Whirlpool room
- 1 & 2 Bedroom
- Exercise room
- Sauna room
- River views



